

HIROSHI SENJU

One of Japan's most influential artists, Hiroshi Senju is always active in his roles as artist and master to about 20 followers.

With the traditional technique of *nihonga* and his vast knowledge, he searches for universal beauty in his works. He combines pigments derived from natural materials such as minerals, seashells, and coral in the medium of animal hide glue, and then, applies his "paint" to special hand-screened Japanese rice paper.

After completing a PhD in Fine Arts at the Tokyo National University of Fine Arts and Music in 1987, he went on to conduct a number of solo shows and participate in group exhibitions in Asia, Europe, and the United States. In 1995, he was the first Asian artist to receive an individual fine arts award at the Venice Biennale for his acclaimed "Waterfall" paintings. One of his more recent solo exhibitions, held at the Yamatane Museum of Art in Tokyo in 2006, exhibited a series of new *fusuma* (sliding screen) created for *Shofuso*, the Japanese House and Garden in Philadelphia, and the "Falling Colors" series. While "Falling Colors" illustrates that random color combinations can still display harmony, it shook the traditional notion of *nihonga* with its use of vivid colors.

Hiroshi Senju - Biography

- 1958 Born in Tokyo, Japan
- 1982 Graduated from Tokyo National University of Fine Arts and Music, *Nihonga* Course, Painting Department, Faculty of Fine Arts
- 1984 MFA from the Graduate School of Tokyo National University of Fine Arts and Music
Graduation work purchased by the university
- 1987 Completed Ph.D (A.B.D.) program in Fine Arts at Tokyo National University of Fine Arts and Music
Graduation work purchased by the University of Tokyo
Participated in the Basel Art Fair, Basel, Switzerland
- 1993 Work selected for the cover of "New York Gallery Guide"
- 1994 Work selected for Bologna International Art Book Fair, Bologna, Italy
Grand Prize, 4th Kanebuchi Picture Book Awards
Merit Award in category of painting, 7th MOA Mokichi Okada Awards
- 1995 Honorable Mention, 46th La Biennale di Venezia, Venice, Italy
Yamatane Museum of Art purchases about 30 works from the early "Building" to the latest "Waterfall" series, beginning of collection
- 1997 Work selected for its excellence and purchased by the Agency for Cultural Affairs
- 1998 *konju-hosho* (Dark Blue Ribbon Medal) for *Hachigatsu no sora to kumo* ("August Sky and Clouds"), held by the Hiroshima City Museum of Contemporary Art
- 2000 Michiaki Kawakita Award, for "Life", exhibited in "Ryoyonome Exhibition: Painting in the 21st Century"
- 2002 Completed series of paintings on *fusuma* (sliding screens) at the Jukoin Betsuin Daitoku-ji Temple
Grand Prize in category of painting, 13th MOA Mokichi Okada Awards
Received a prize in the 1st Nikkei Japanese Painting Award in honor of Kaii Higashiyama
- 2003 Completes a 3m x 25m mural for the foyer of Grand Hyatt Tokyo
Director of International research Center for the Arts, Kyoto University of Art and Design
- 2004 Working as Art Director of Haneda Airport's Terminal 2. Created a 100 square meter ceiling painting, a 20-meter long three-dimensional sculpture, and painted a 12-meter long ceiling mural.
- 2005 Contributed to the staging & interpretation of "Intangible Cultural Asset – All About Noh and Kyogen – A Tradition blooms" at Aichi Expo

Present

Vice President, Kyoto University of Art and Design, director of its International Research Center for the Arts, also Director of its Kyodo Museum of Art

Selected Solo Exhibitions

- 1988 - "SENJU", Galeria Forni (Bologna, Italy)
 - Tobi Special Exhibition, Tokyo Art Club (Tokyo, Japan)
- 1989 - "The End of the Dreams", Manly Art Gallery & Museum (Sydney, Australia)
- 1991 - Taigado Gallery (Kyoto, Japan)
 - Shiseido Gallery (Tokyo, Japan)
- 1992 - Tobi Special Exhibition at Tokyo Art Club (Tokyo Japan)
- 1993 - "Flat Water", Maxwell Davidson Gallery (New York, U.S.A.)
- 1994 - "Hiroshi Senju 1980-1994", Takamura Museum (Yamanashi, Japan)
 - "When Stardust Falls...", Mitsukoshi Gallery (Tokyo, Osaka, Sendai, Japan)
- 1995 - "Hiroshi Senju", Taipei Fine Arts Museum (Taipei, R.O.C.)
 - NICAFA Yokohama (Yokohama, Japan)
- 1996 - "Hiroshi Senju - Waterfalls & Glasses"
 - The Hakone Open-Air Museum (Kanagawa, Japan)
 - Maxwell Davidson Gallery (New York, U.S.A.)
- 1997 - "Hiroshi Senju", Isetan Art Gallery (Tokyo, Japan)
- 1999 - Maxwell Davidson Gallery (New York, U.S.A.)
- 2001 - Matsuzakaya Gallery (Nagoya, Japan)
- 2003 - "Hiroshi Senju – Retrospective of 20 years"
 - Mitsukoshi Art Gallery (Tokyo, and traveling, Japan)
- 2004 - "Hiroshi Senju - Retrospective & New works"
 - Takashimaya Gallery (Tokyo, Japan)
- 2005 - "Hiroshi Senju", Fukuoka Asian Art Museum (Fukuoka, Japan)
- 2006 - "Hiroshi Senju", Yamatane Museum of Art (Tokyo, Japan)

Selected Group Exhibitions

- 1987 - "Japanese-Style Art Today", Yamatane Art Museum (Tokyo, Japan)
- 1990 - "History of Japanese style Paintings"
 - The Museum of Modern Art (Kamakura, Japan)
 - "Modern Japanese Folding Screen Paintings"
 - Landes Museum (Düsseldorf, West-Germany)
- 1994 - Maxwell Davidson Gallery (New York, U.S.A.)
 - "The Art Show", Art Dealers Association of America (New York, U.S.A.)
 - International Art Book Fair (Bologna, Italy)
 - "Okada Mokichi Award Show", MOA Museum (Atami, Japan)
- 1995 - Dillon Gallery (New York, U.S.A.)
- 1999 - Dillon Gallery (New York, U.S.A.)
- 2000 - "Hiroshi Senju, Yuki Ikenobo, Takahiro Kondo"
 - Takashimaya Gallery (Osaka and traveling, Japan)
- 2002 - "THE NEW WAY OF TEA"
 - Japan Society Gallery, Asia Society Museum (New York, U.S.A.)
- 2003 - "Painting on *Fusuma* at the Jukoin Betsuin Daitoku-ji Temple"
 - Tokyo National Museum (Tokyo, Japan)
- 2005 - "Luxus L-Finesse"
 - Milano Salone, Teatro Arte, La Triennale di Milano (Milan, Italy)
- 2006 - The 6th Gwangju Biennale (Gwangju, South Korea)
 - "NAOSHIMA STANDARD", Chichu Art Museum (Kagawa, Japan)

Major Collections

Tokyo National University of Fine Arts and Music

University of Tokyo

Tokyo Institute of Technology

Keio University

University of California, Los Angeles

Tokyo International Airport (Haneda Airport)

Yamatane Museum of Art

The Museum of Contemporary Art (MOCA), Los Angeles

Osaka Museum of Contemporary Art

The Museum of Modern Art, Kamakura

The Museum of Modern Art, Toyama

Oita City Art Museum

Kushiro Art Museum, Hokkaido

Official Residence of Japanese Ambassador to the United Nations, New York

Japanese Embassy in London

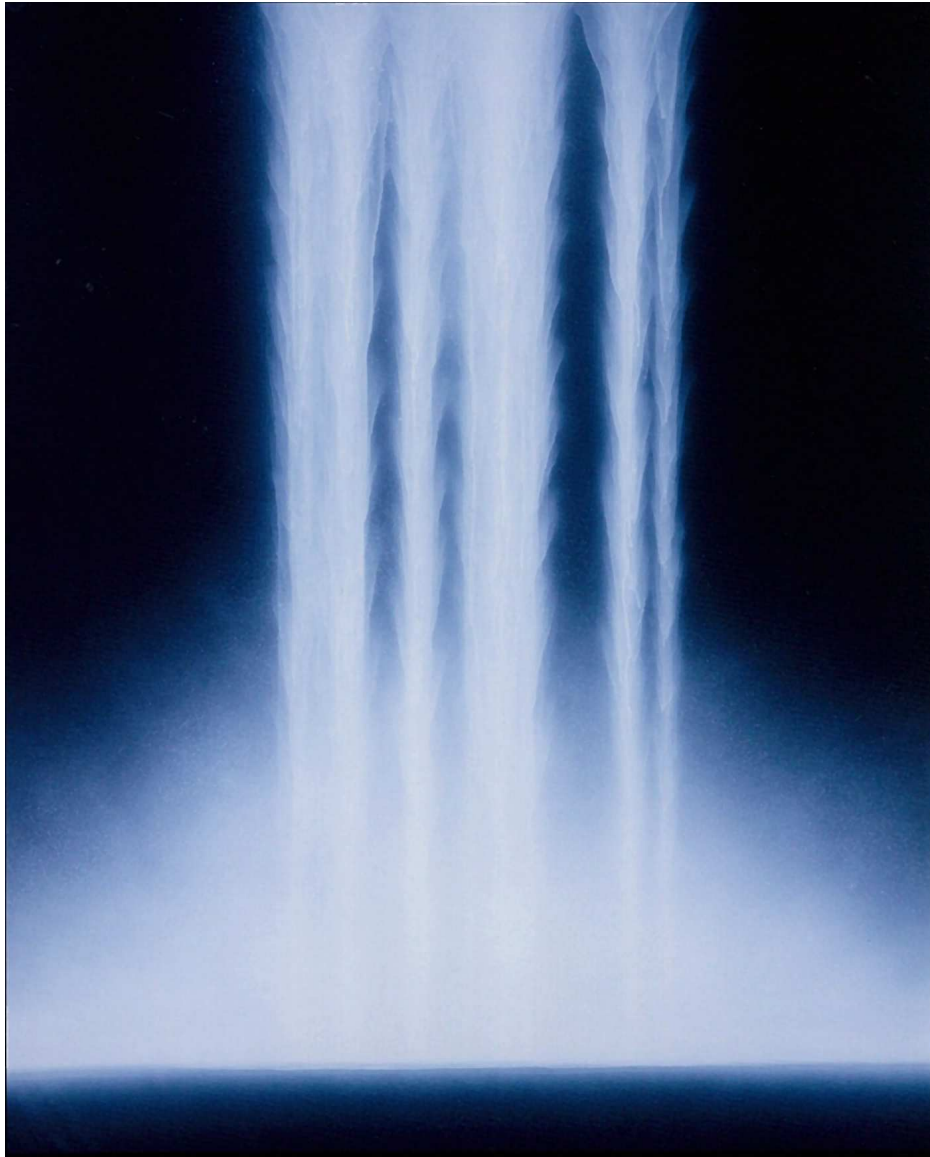
Official Residence of the Japanese Ambassador in Rome

Japanese Consulate General in Melbourne

Ministry of Foreign Affairs' Iikura House

Agency for Cultural Affairs

Meiji Shrine



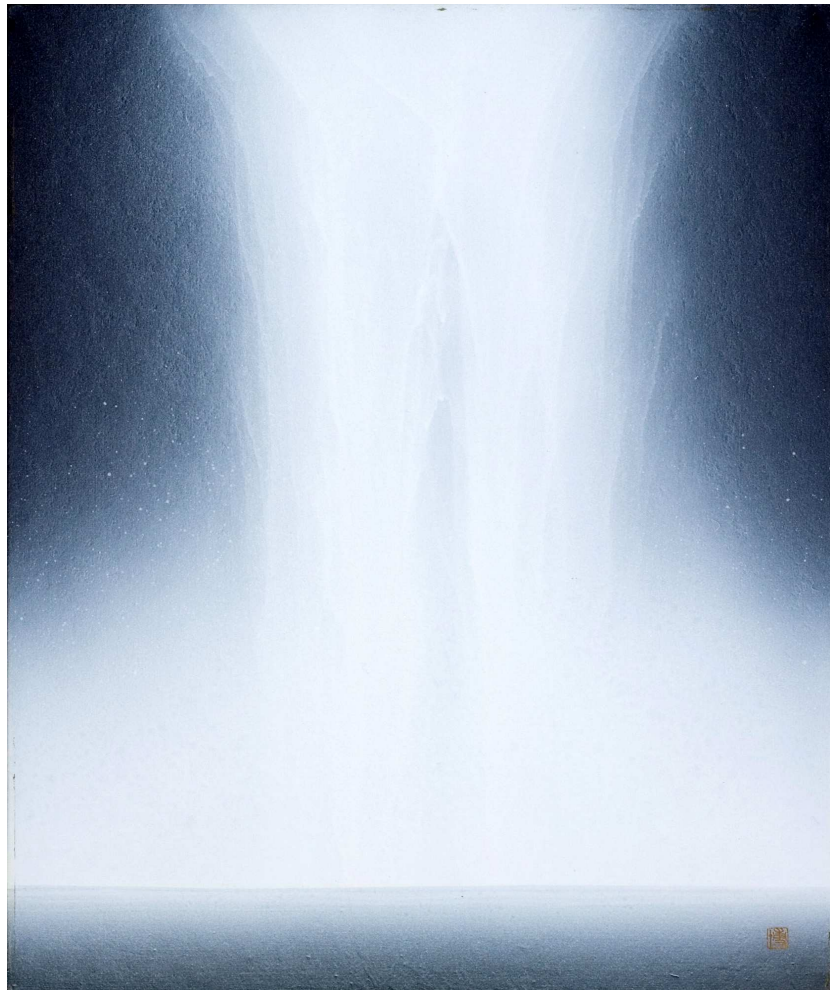
Waterfall, 2007
162.1 x 130.3



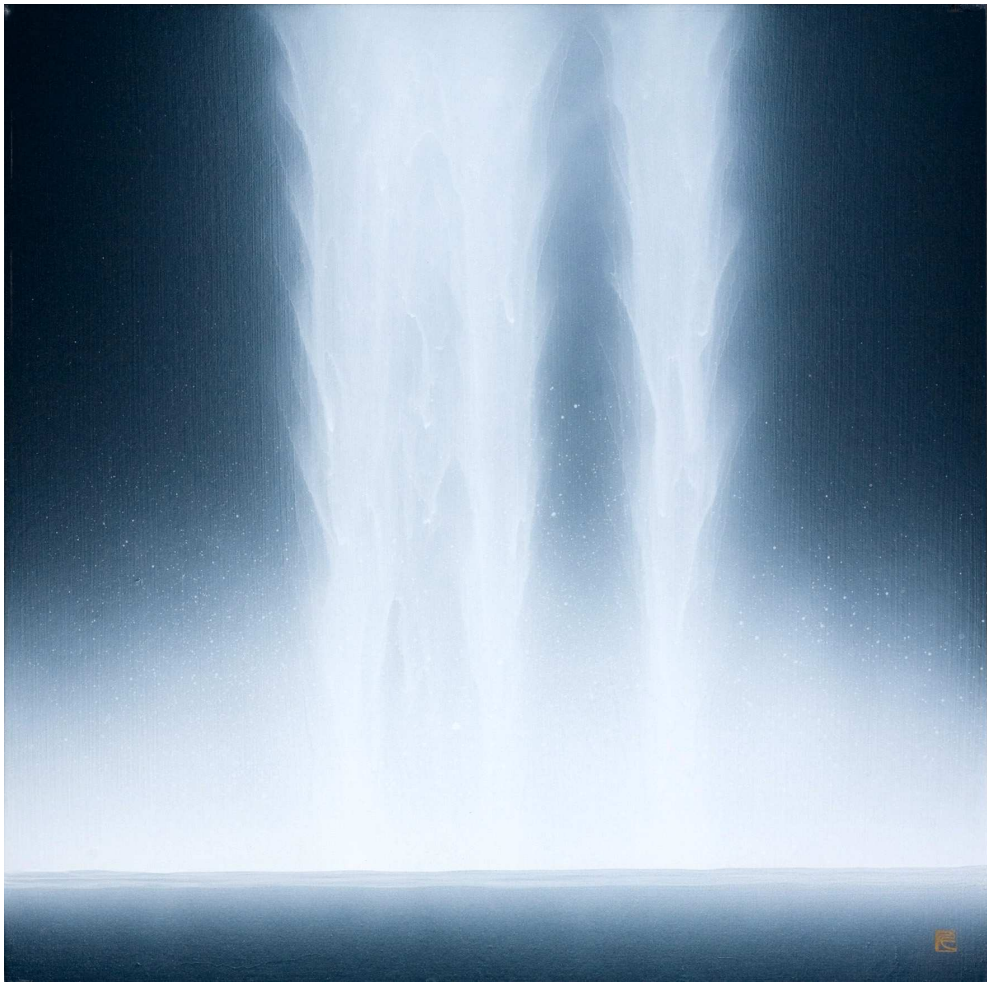
Falling Color, 2007
45.5 x 45.5



Falling color, 2007
40.9 x 40.9



Waterfall, 2007
45.5 x 37.9



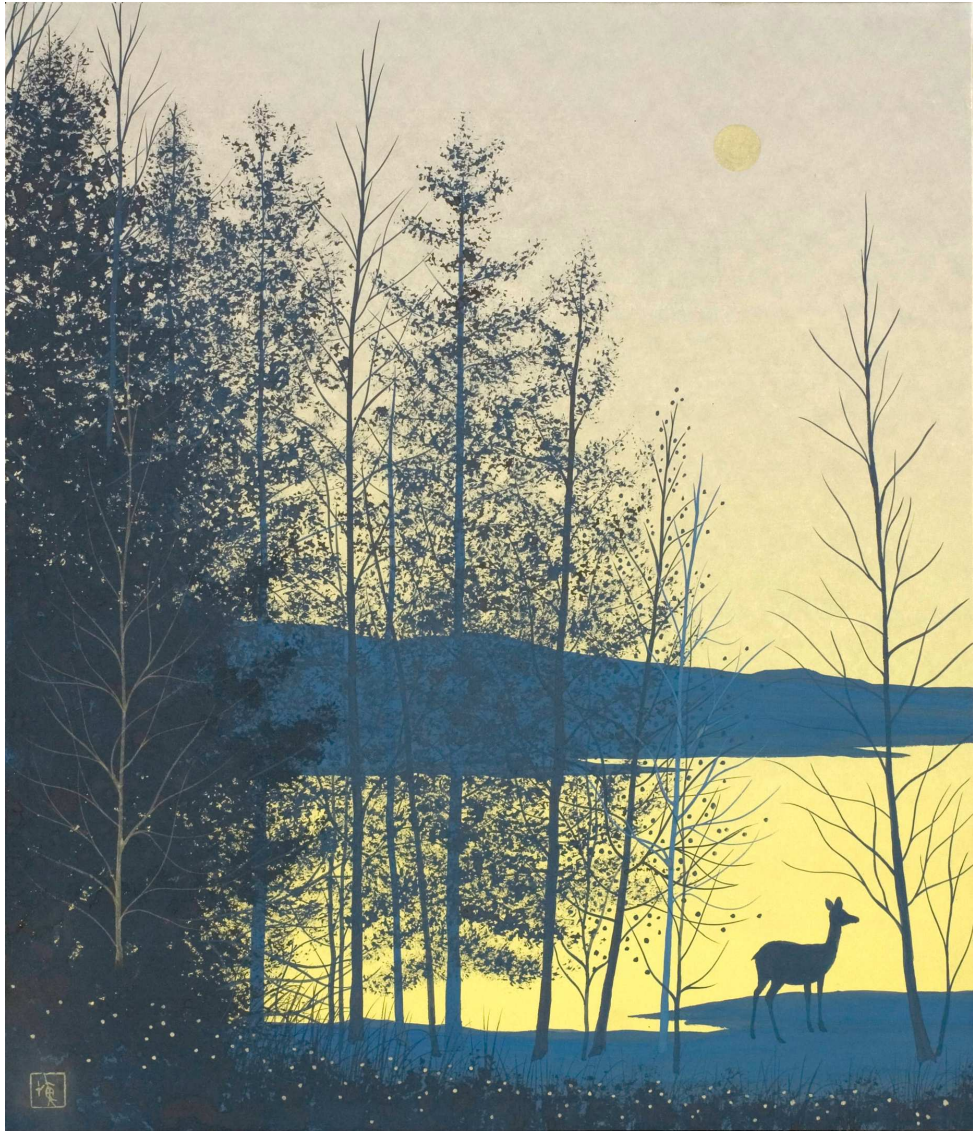
Waterfall, 2007
45.5 x 45.5



Tidewater, 2007
45.5 x 45.5



Waterfall, 2007
33.4 x 24.3



Morning Light
53 x 45.5