

KAORU KAN

Kaoru Kan - Biography

- 1976 Born in Oita, Japan
- 2000 Graduated from *Nihonga* course, Kyoto University of Art and Design, Japan
- 2001 Shinsei Prize, 5th Shinsei Awards
- 2002 Work selected for the 6th Shinsei Awards
- 2004 Fellow, International Research Center for the Arts, Kyoto University of Art and Design, Japan
- 2007 Completed wall painting (2.0 x 7.3m) for entrance hall of TOMOE VALVE co., ltd, Osaka, Japan

Currently lives and works in Kyoto, Japan

Selected Solo Exhibitions

- 2003 - "Kan Kaoru", SHINSEIDO-HATANAKA Art Gallery, Tokyo
- 2005 - "Water Planet", Gallery Shiraishi, Tokyo
- 2006 - "Inside light – Outside silence", Daimaru Shinsaibashi, Osaka
- "Flowers", Taigado Gallery, Kyoto
- 2007 - "Microcosm", Maruei Galerie Espace, Nagoya
- 2008 - "covered", Kobe Daimaru, Kobe

Selected Group Exhibitions

- 2001 - "5th Annual Selected Exhibitions/Shinseido Awards"
SHINSEIDO-HATANAKA Art Gallery, Tokyo
- 2002 - "6th Annual Selected Exhibitions/Shinseido Awards"
SHINSEIDO-HATANAKA Art Gallery, Tokyo
- 2003 - "Prescience group exhibition", Takashimaya Art Gallery, Tokyo
- 2005 - "Art Fair Tokyo", Tokyo International Forum, Tokyo
- "GINGA group exhibition", Kintetsu Uehonmachi, Osaka
- 2006 - "Millennium - Thousand stars", Seibu Ikebukuro, Sogo Shinsaibashi and Kobe
- 2007 - "Millennium - Senju Hiroshi and new wave"
Onward Gallery Nihonbashi, Tokyo
- "Art Shanghai 2007", Shanghai, China
- 2008 - "Millennium 08", Onward Gallery Nihonbashi, Tokyo
- "Kyoto Art Gallery Fair", Kyoto

Microcosm series

"When I look at a goldfish in a bowl, I get the same feeling I do when I look down at the ground from an airplane. Sometimes, I identify with the lone goldfish swimming in the bowl, which resembles a spaceship. There, one world exists and the universe spread out.

My imagination envelops this small, round world and I wish I could be in it; I can feel it through my drawing..."



Round microcosm (Moonlight), 2006
84.5 x 100



Round Microcosm (Daylight)
84.5 x 100



Round Microcosm, 2006
53 x 45.5

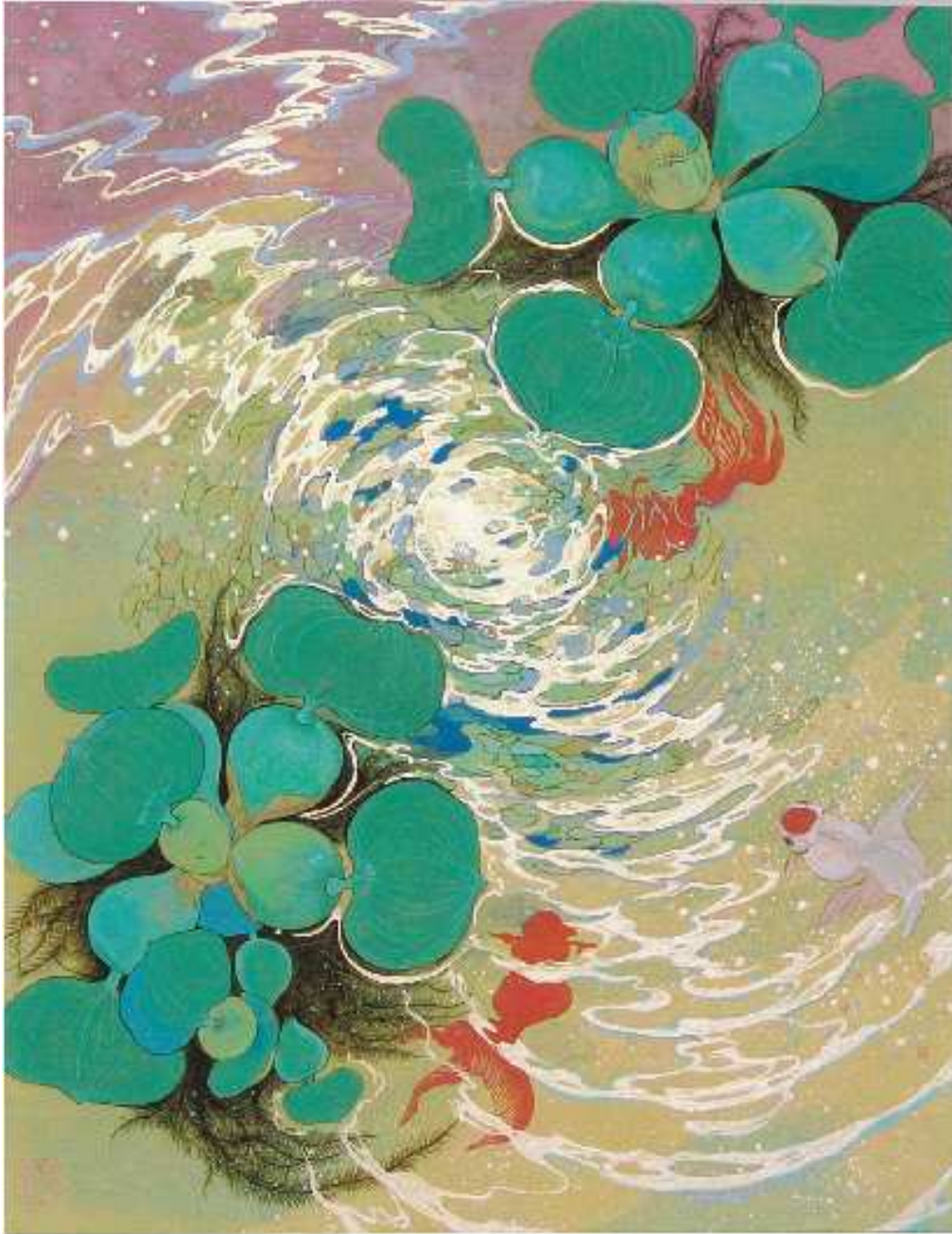


Memory of water (Rose and Sky)
30 x 26



Memory of water (Night and Rose), 2007

30 x 26



Swimming
40.9 x 31.8



Sunset clouds

52 x 60



Memory
26 x 30



Ripple
33.4 x 24.3



Memory of water (rose)

30 x 26



Round Microcosm

53 x 45.5

Flowers

"The flower should have a memory.

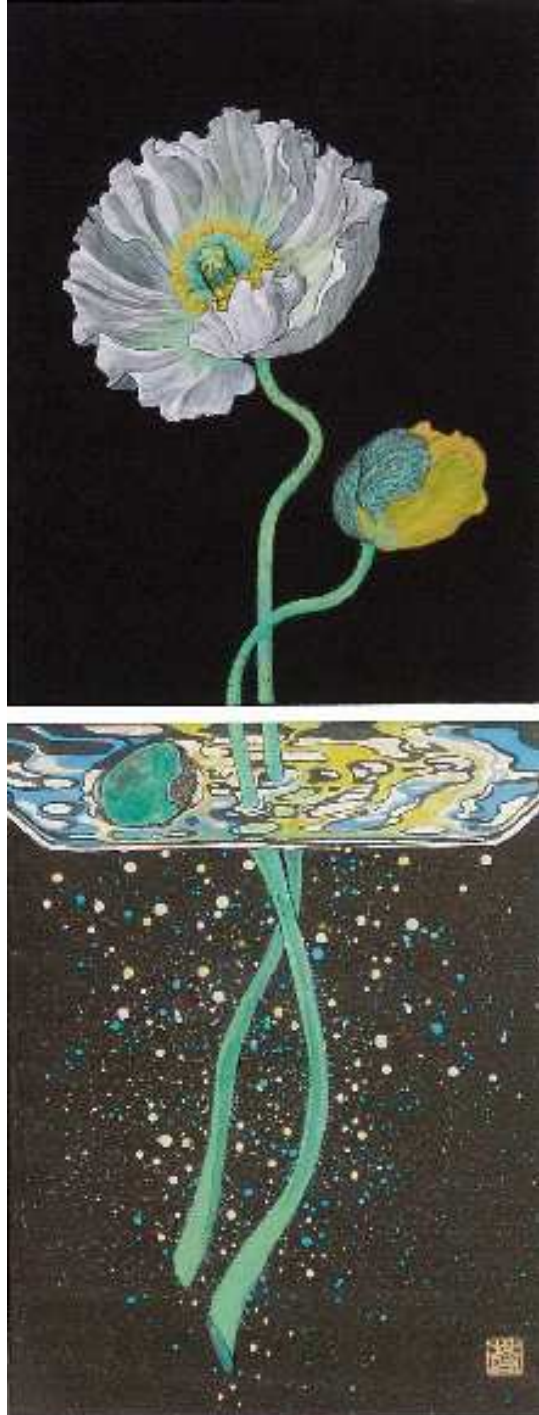
Before it withers in the vase, I'll read its memory and fix it in my drawing. Even if the flower's memory has faded away, I want to immortalize it in the picture."



Flower in a glass (Lily)



Flower in a glass (Turkish bellflower)



Flower in a glass (Poppy)



Flower in a glass (Orchid)



Flower in a glass (Peony)



Flower in a glass (Peony)



Color of water

31.8 x 40.9



Cattleya
37.9 x 45.5



Odette
60.6 x 50